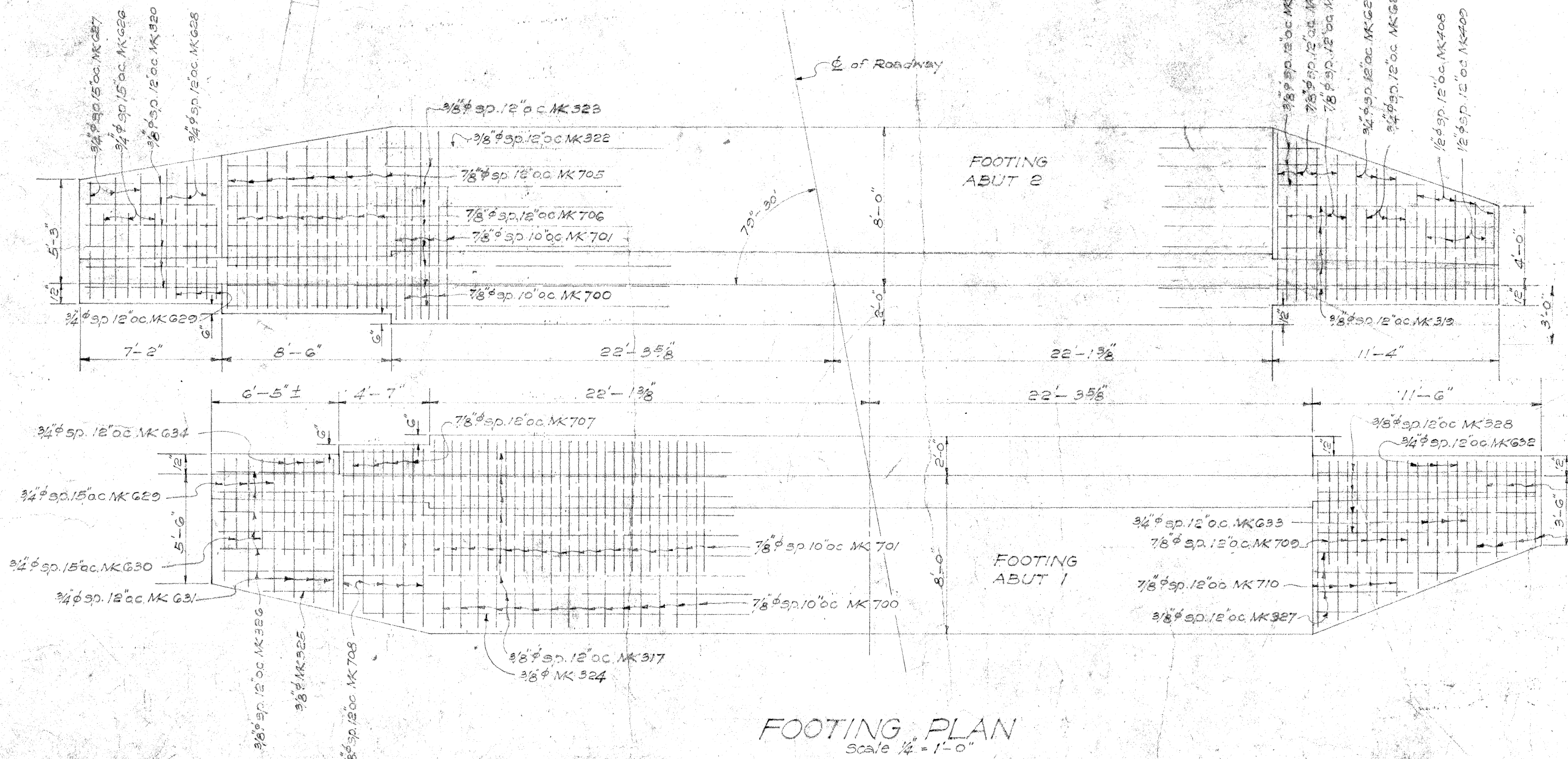
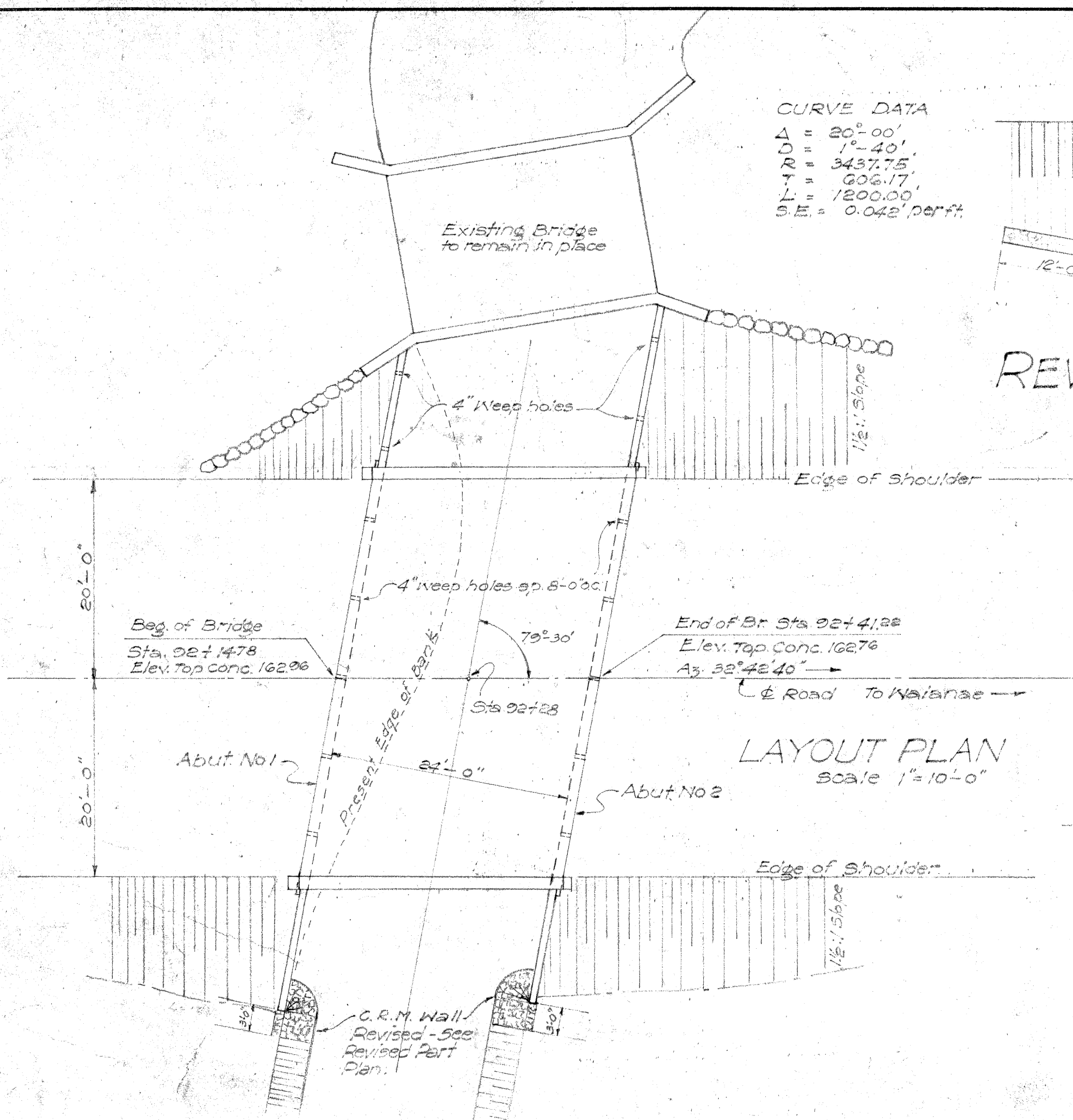
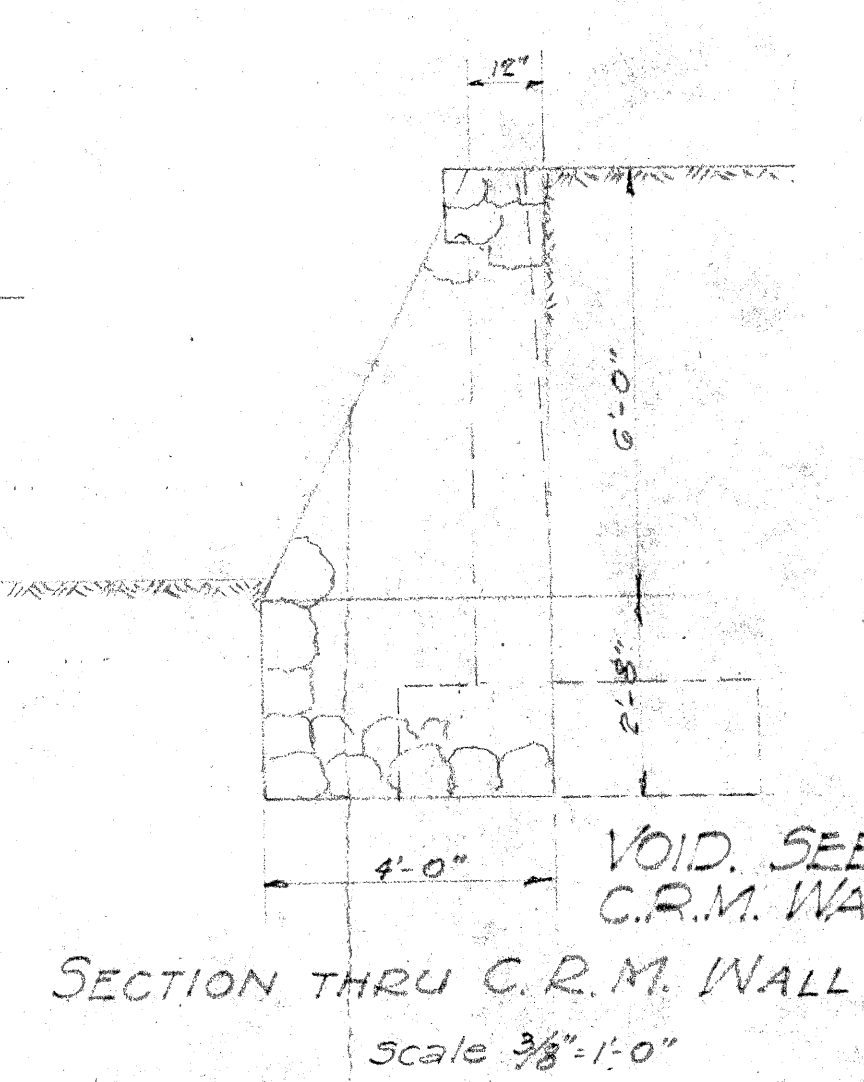
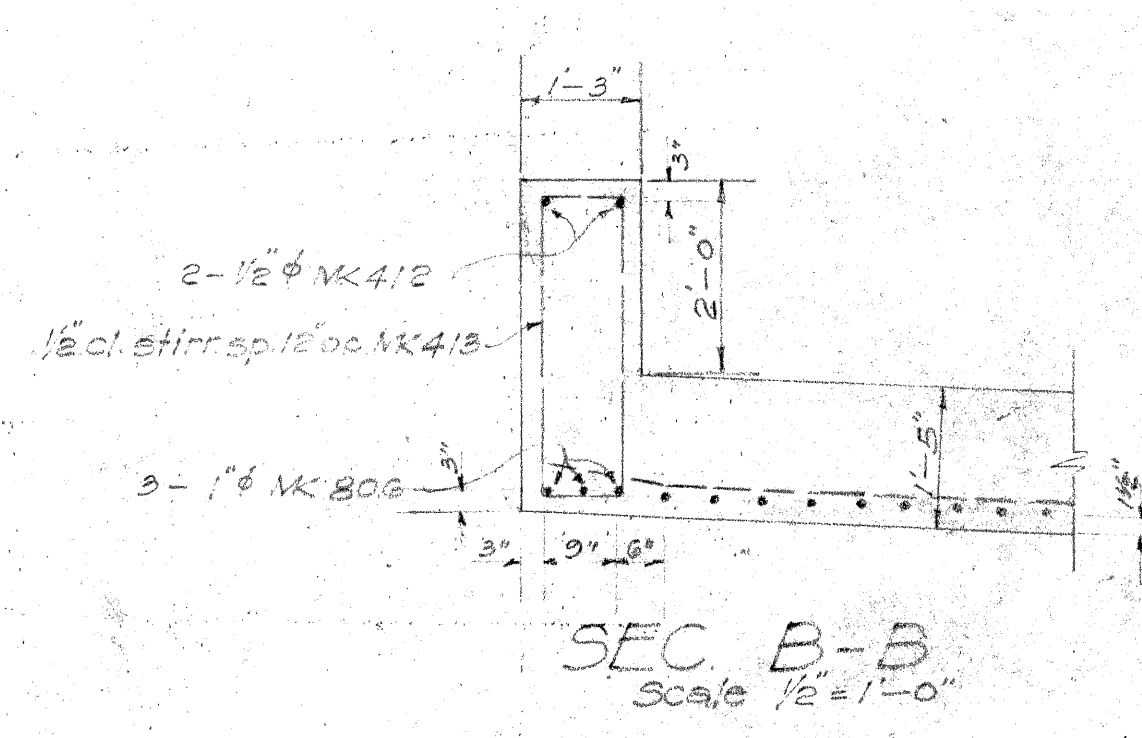
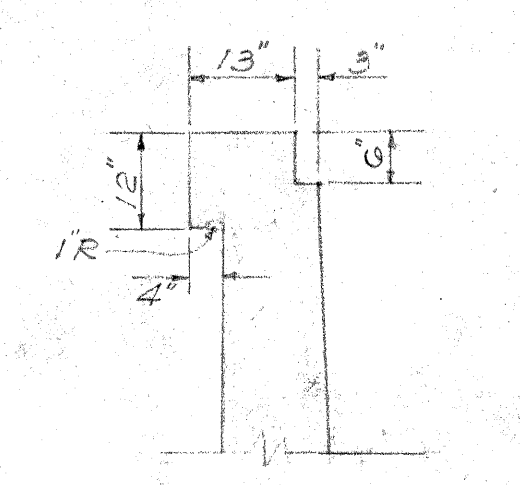
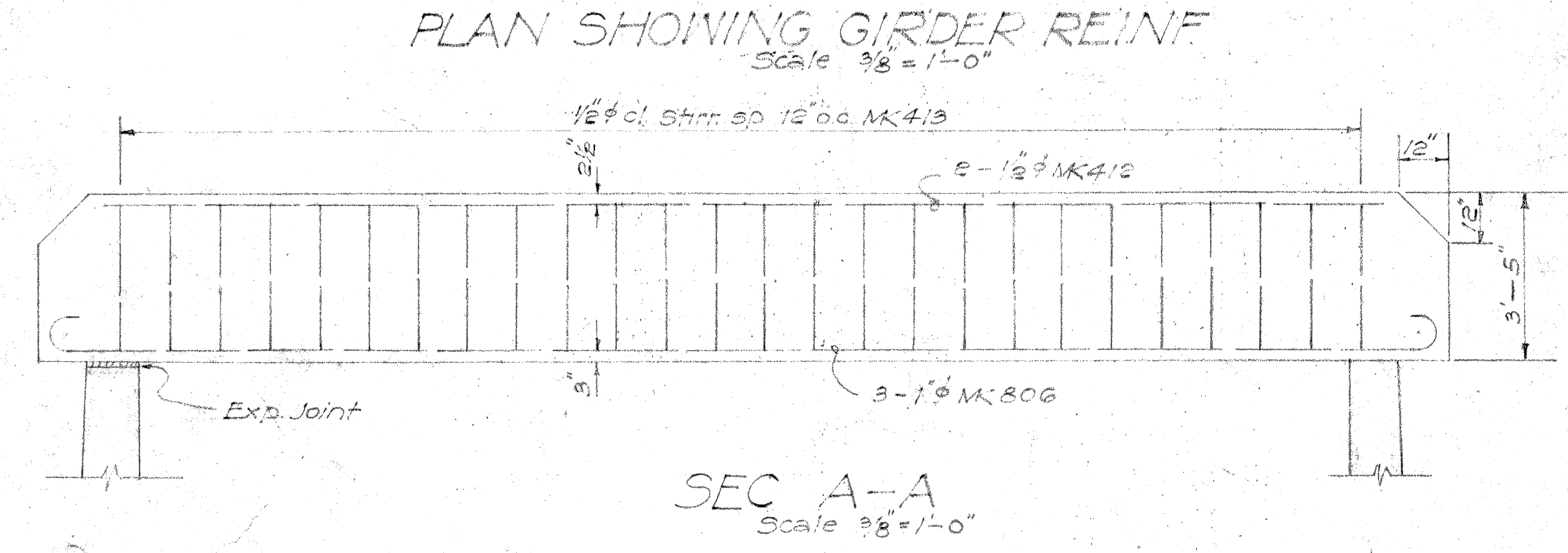
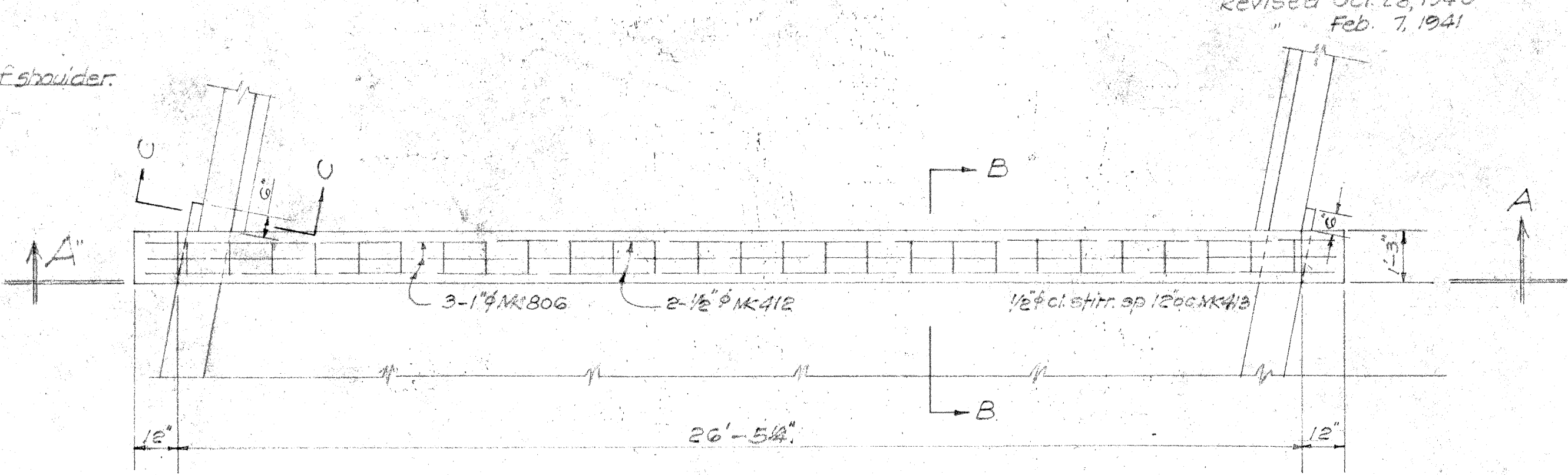
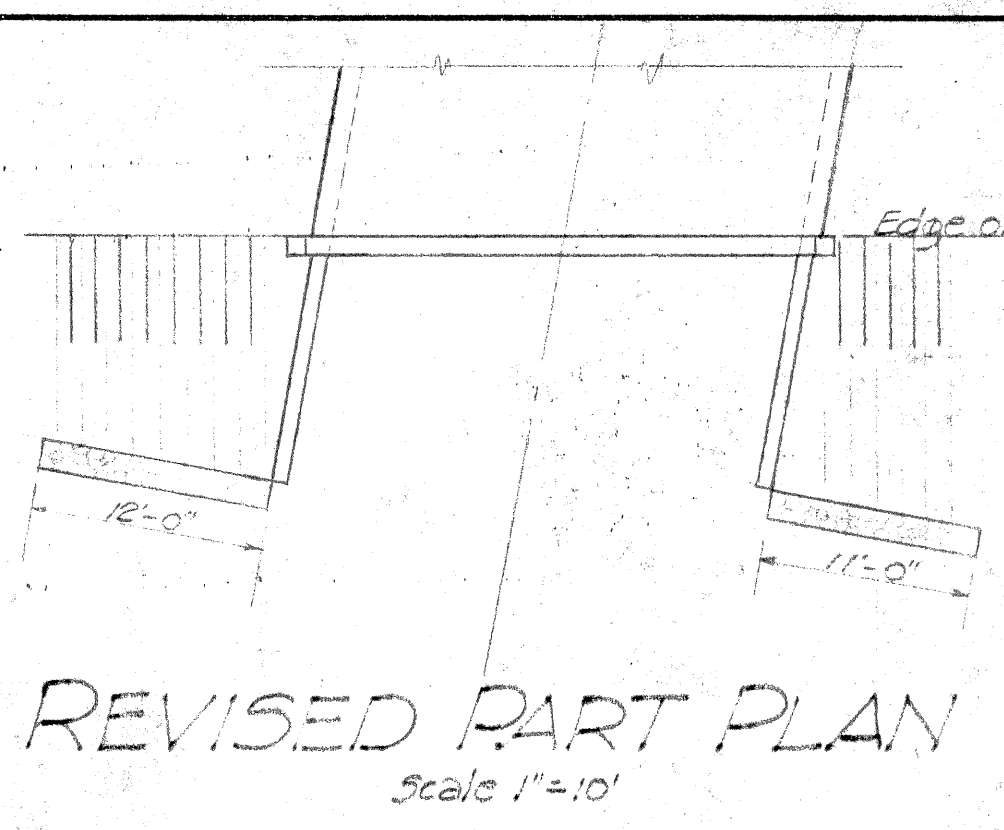


Revised Oct. 28, 1940  
Feb. 7, 1941

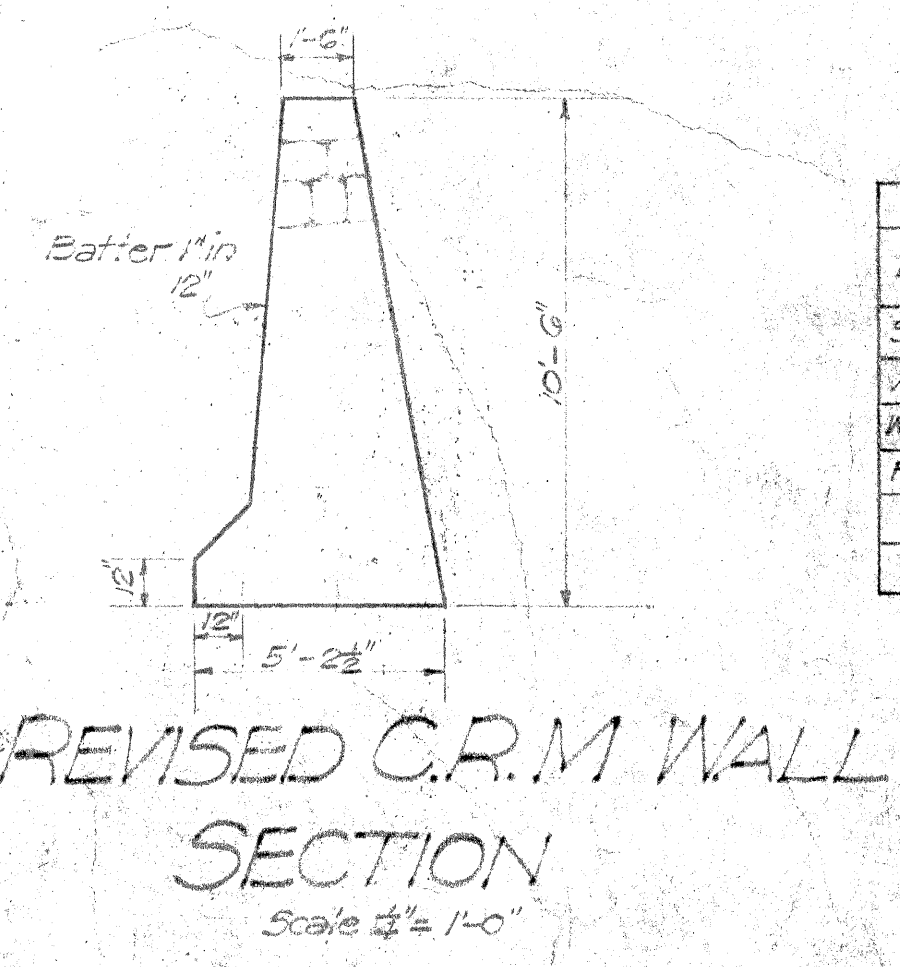
FED. ROAD DIST. NO.	STATE	FED. AID PROJ. NO.	FISCAL YEAR	SHEET NO.	TOTAL SHEETS
HAWAII	HAW	4-D(1)	1940	9	23

CURVE DATA  
 $\Delta = 20^{\circ}-00'$   
 $R = 3437.75'$   
 $L = 1200.00'$   
 $S.E. = 0.042' \text{ per ft}$



Note: For Brush Coat Waterproofing see Sec. 34 Paragraph N of the specifications.

LOCATIONS	ESTIMATED CLASS 'CONC. REINF. ST.		QUANTITIES STR. EXC. CHANNEL		C.R.M. C.Y.
	C.Y.	LBS.	C.Y.	EXC.	
SUPERST.	64.5	8529			
ABUT.	63.3	7794			
WINGWALLS	23.4	2746			
FOOTINGS	82.1	6211	550		
TOTAL	233.3	25280	550	30.0	7.0



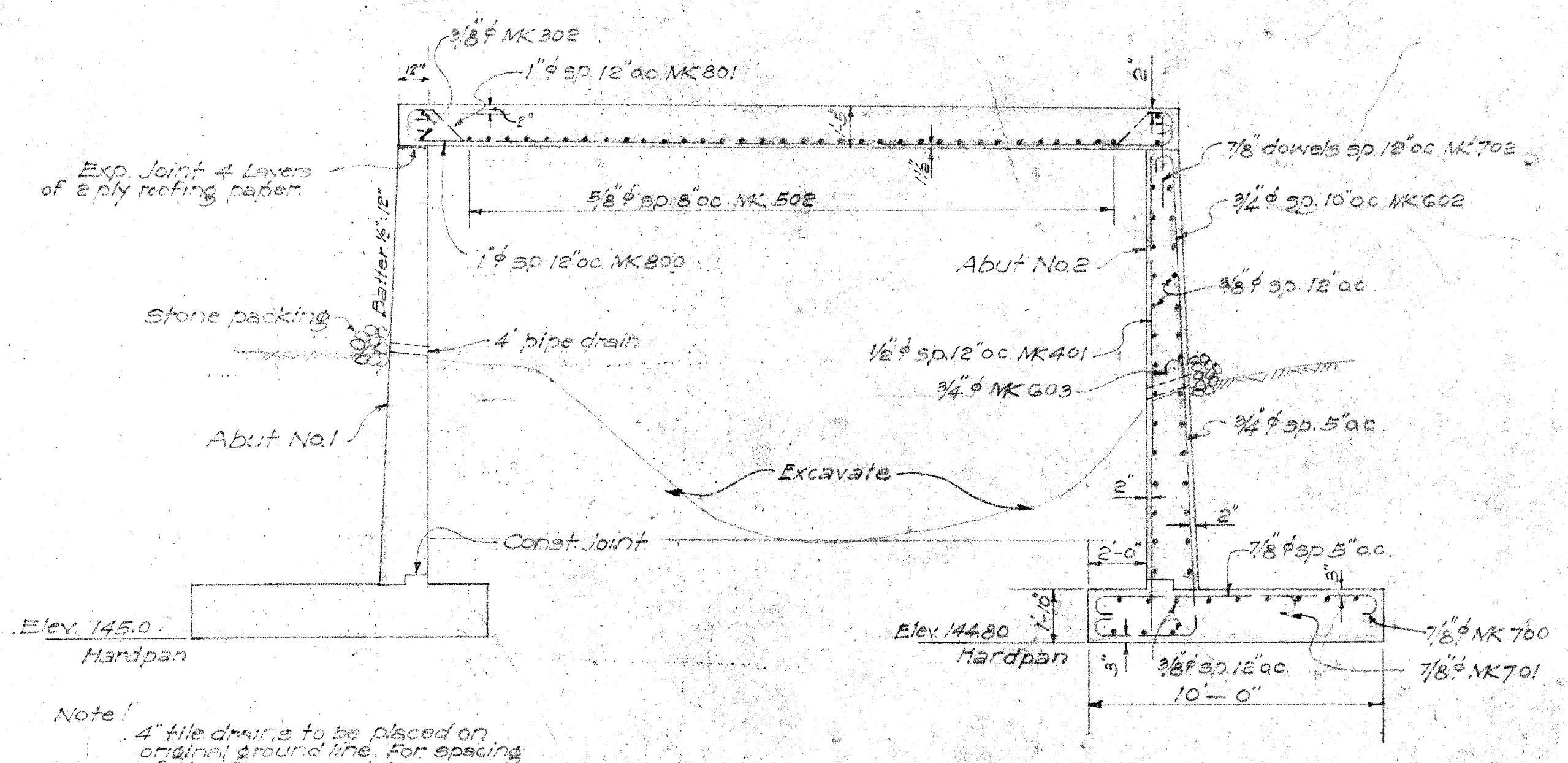
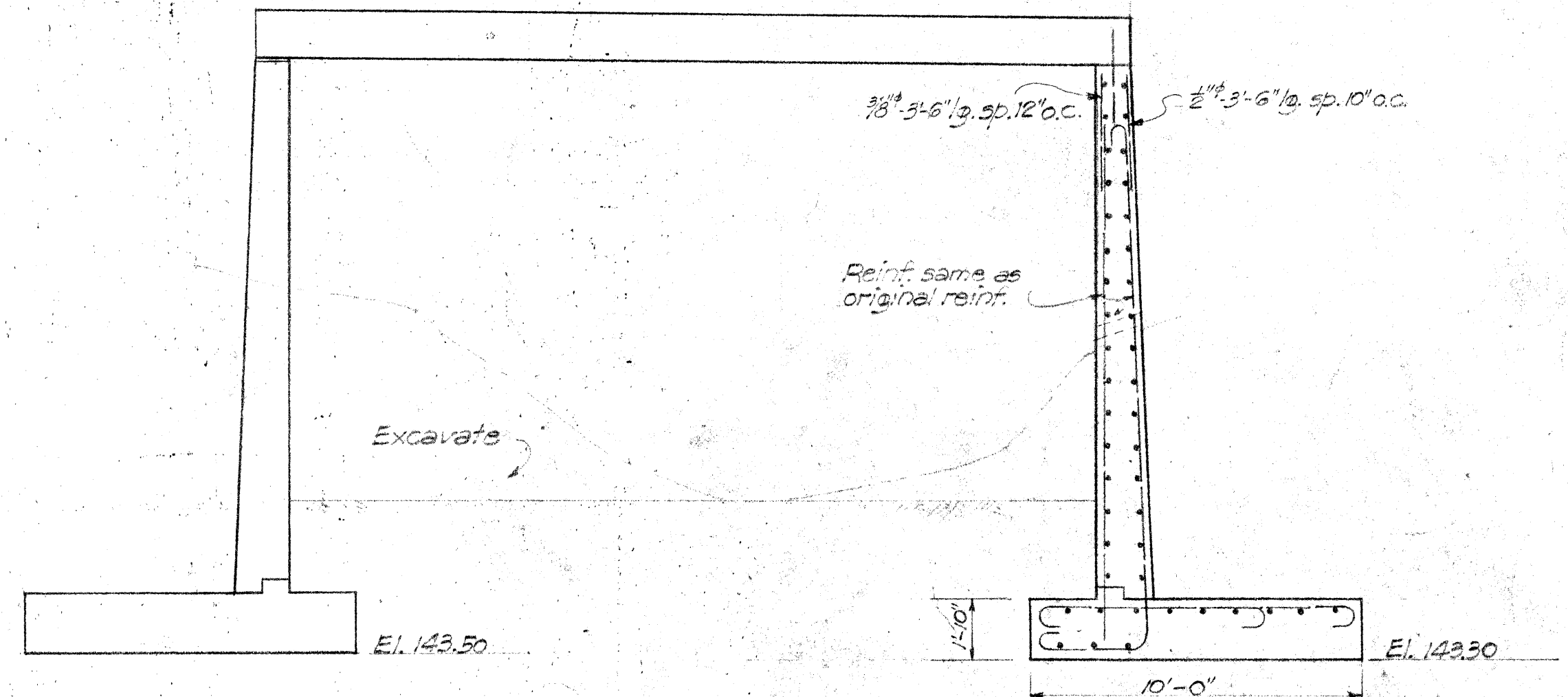
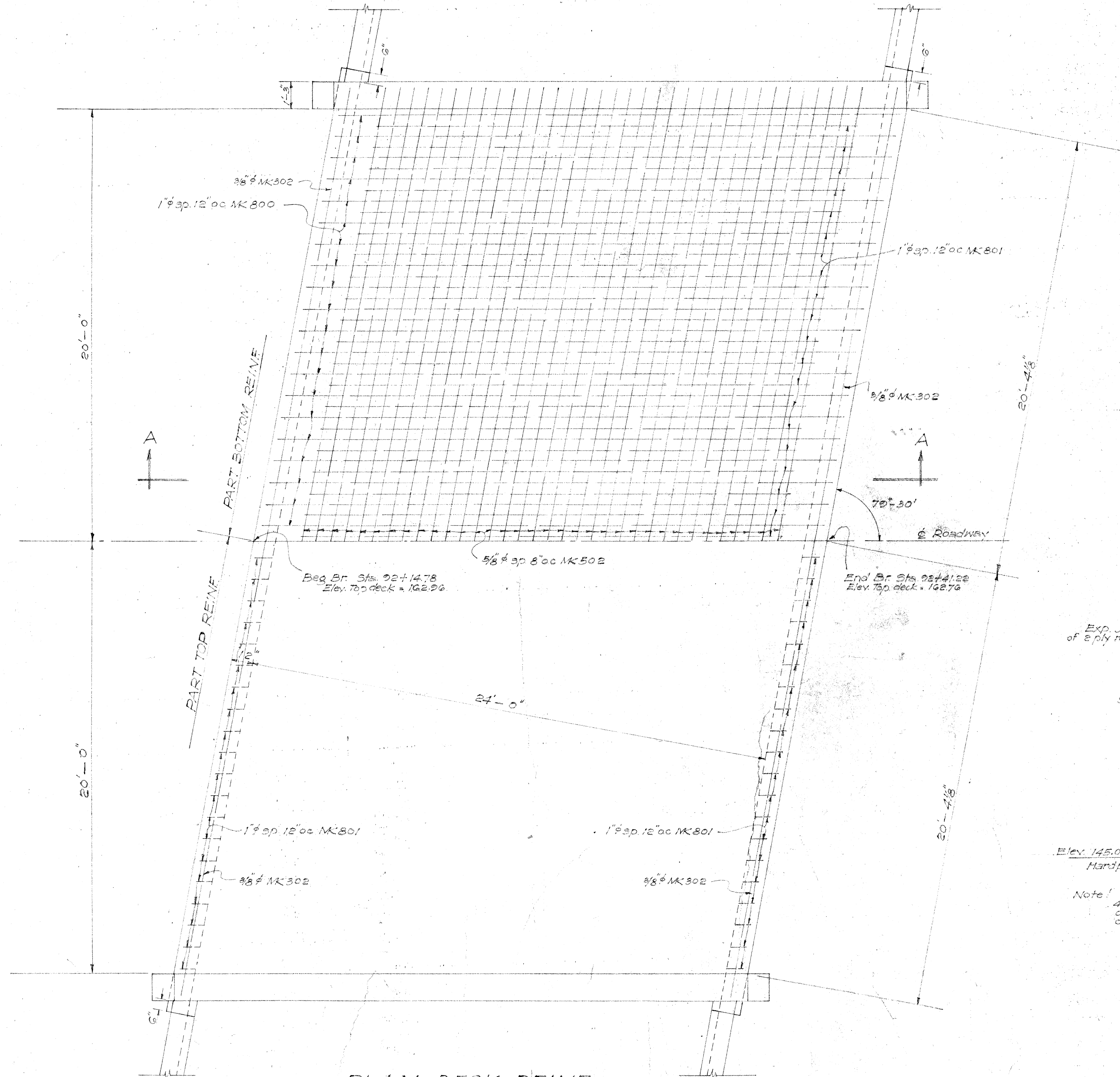
Farrington Hwy Br #1  
 TERRITORIAL HIGHWAY DEPARTMENT  
 TERRITORY OF HAWAII  
 BRIDGE No. 1  
 STA 92+14.78 TO 92+41.22  
 WAIANAE ROAD - F.A.P. 4-D(1)  
 SHEET No. 1 OF 5 SHEETS

1st Revision Change in plan C.R.M. wall changed.

DESIGNED BY	DATE
FRAMED BY	20/1/36
QUANTITIES BY	
QUANTITIES CHECKED BY	
CHECKED BY	
ORIGINAL PLAN	
NOTE BOOK	
No.	

Revised Oct. 28, 1940  
Feb. 7, 1941

FED. ROAD DIST. NO.	STATE	FED. AID PROJ. NO.	FISCAL YEAR	SHEET NO.	TOTAL SHEETS
HAWAII	HAWAII	400	1940	10	23



Revision: - Change in elev. of footing covered

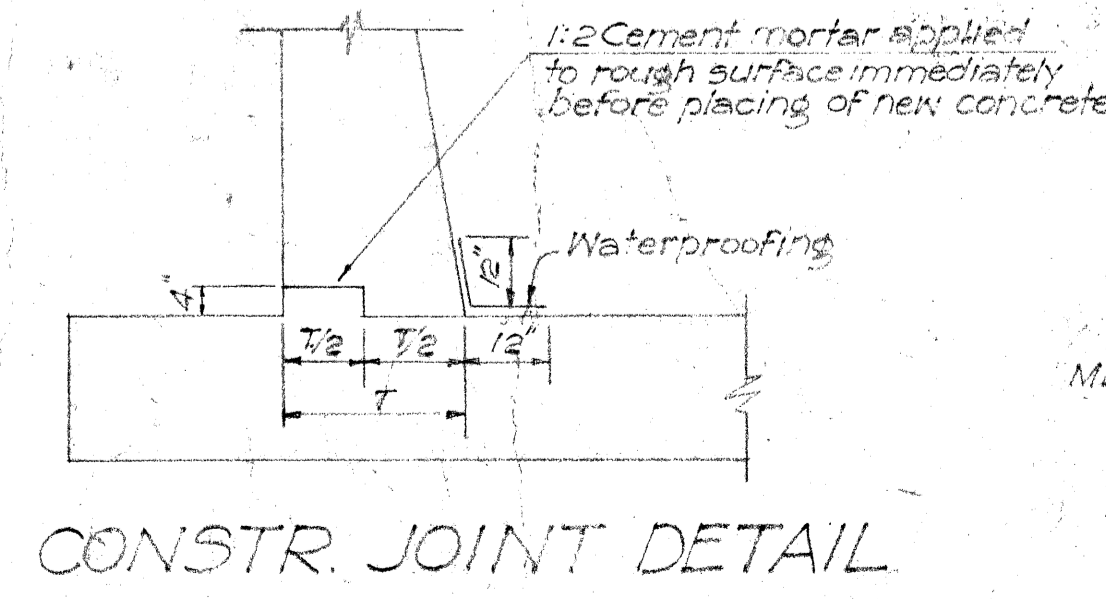
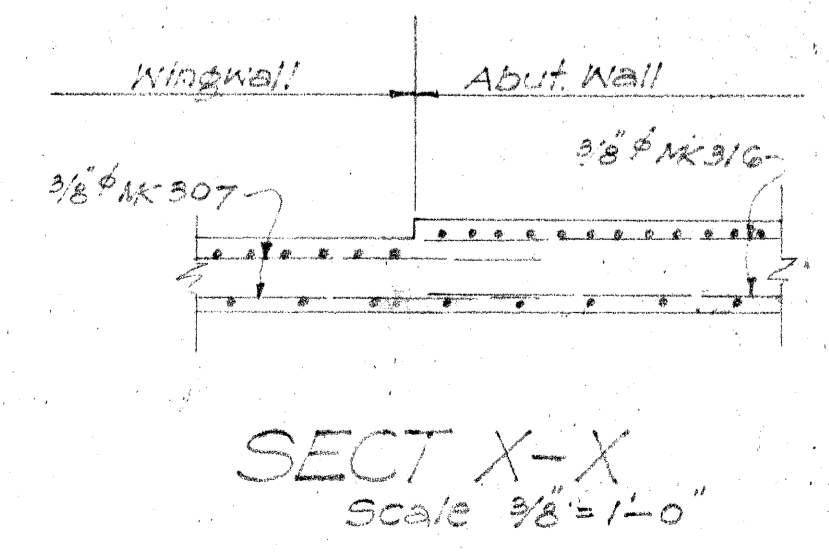
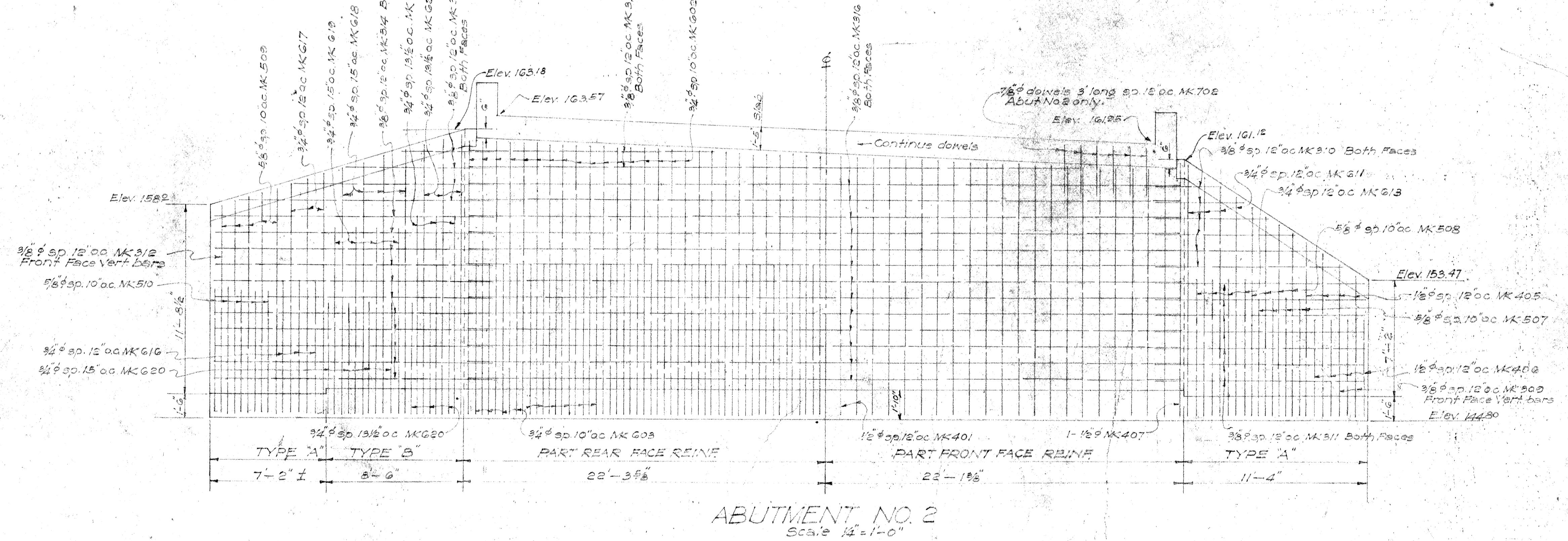
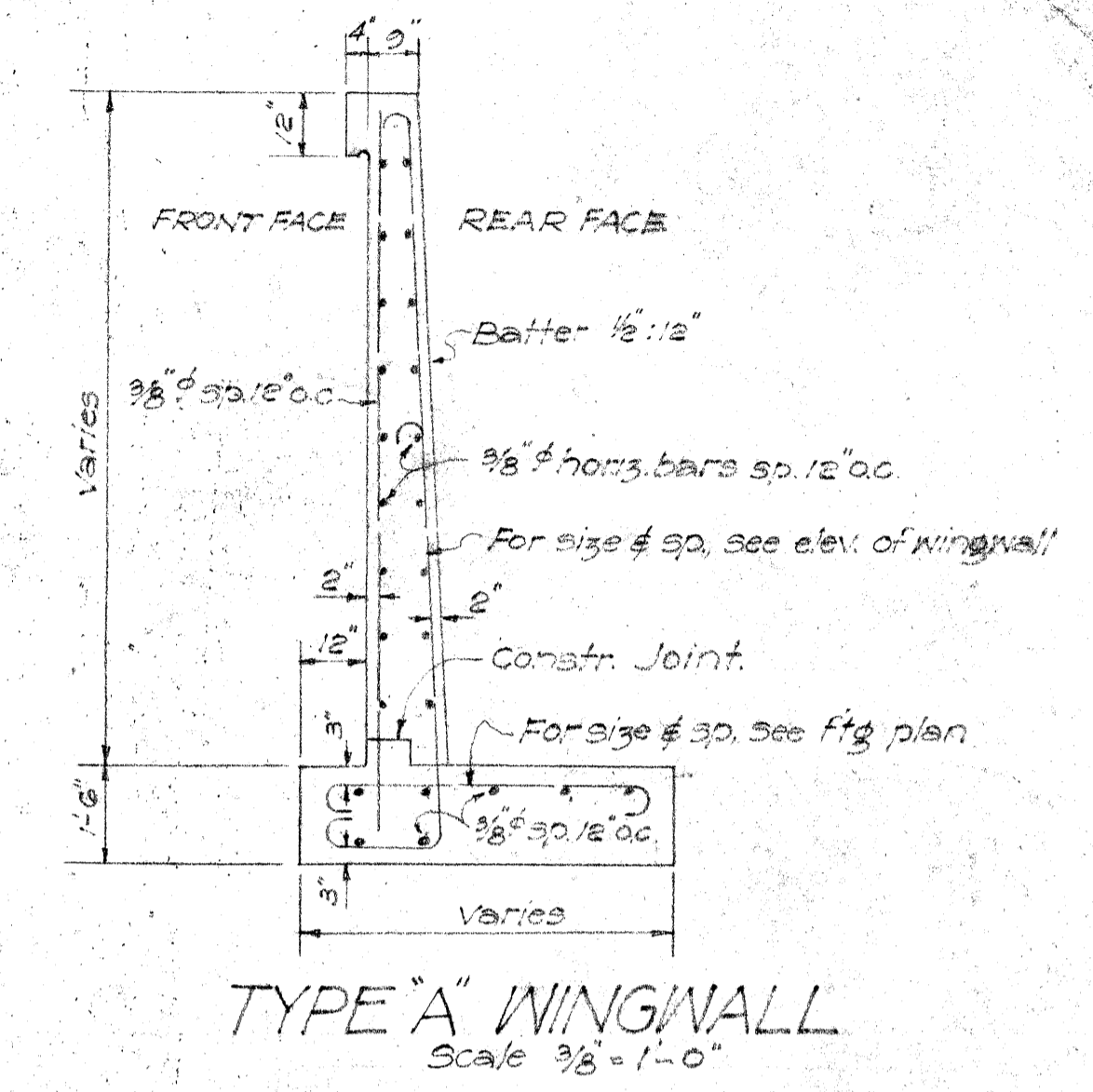
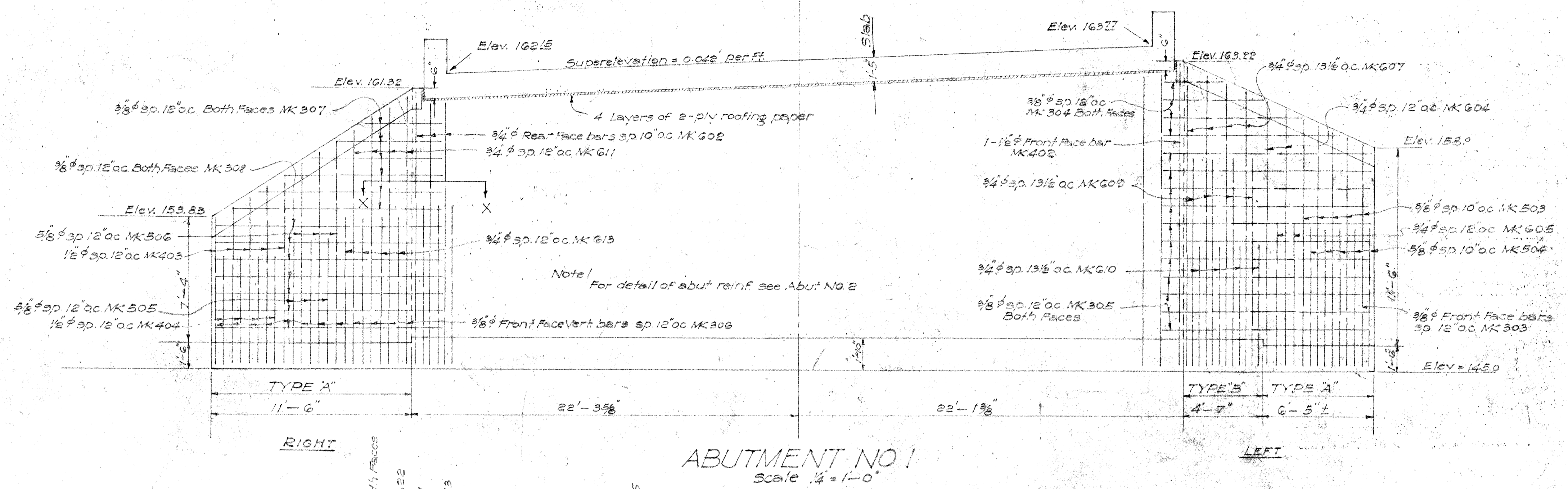
ORIGINAL PLAN	DESIGNED BY	DATE
NOTE BOOK	QUANTITIES CHECKED BY	DATE
CHECKED BY	DATE	

TERRITORIAL HIGHWAY DEPARTMENT  
TERRITORY OF HAWAII  
**BRIDGE No. 1**  
STA. 92+14.78 TO 92+41.22  
WAIANAE ROAD - F.A.P. 4-D(1)  
SHEET No. 2 OF 5 SHEETS

4468.10A

Revised Oct. 28, 1940

FED. ROAD DIST. NO.	STATE	FED. AID PROJ. NO.	FISCAL YEAR	SHEET NO.	TOTAL SHEETS
HAWAII	HAWAII	4-D(1)	1940	11	23



**METHOD OF APPLYING CONSTR. JOINT WATERPROOFING**

First: Mop surface 18" either side of joint with asphalt 85-100 penetration, applied at 200°F

Second: Apply one layer of 2-ply roofing paper lapping 12" either side of joint to hot asphalt; then mop entire surface with a thick coat of hot asphalt

Note: Regarding brushcoat waterproofing see General Notes

**TERRITORIAL HIGHWAY DEPARTMENT**  
TERRITORY OF HAWAII

**BRIDGE No. 1**

STA. 92+1478 TO 92+4122

WAIANAE ROAD F.A.R. 4-D(1)

SHEET No. 3 OF 5 SHEETS

SURVEY PLOTTED BY	DATE
DESIGNED BY	
DRAWN BY	
QUANTITIES BY	
NOTE BOOK	
CHECKED BY	

Revision - Change in Story

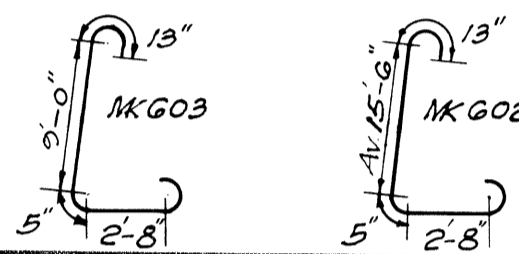
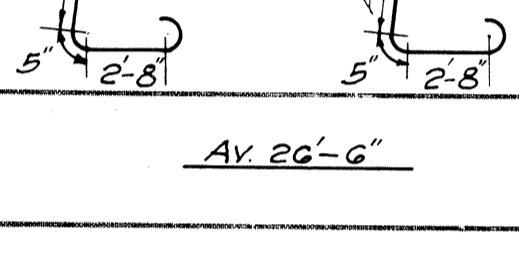
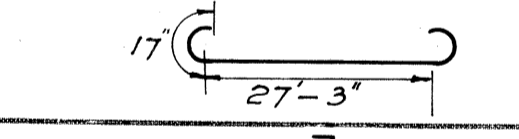
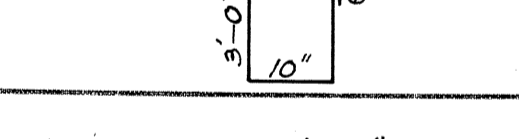
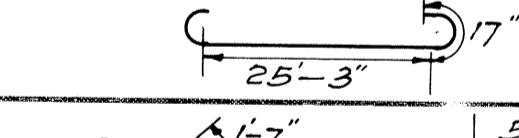
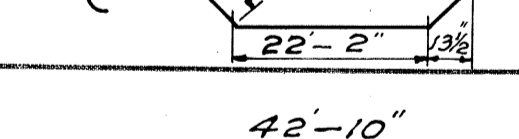
4468.11A



# STEEL SCHEDULE

Revised Oct. 28, 1940

FED. ROAD DIST. NO.	STATE	FED. AID PROJ. NO.	FISCAL YEAR	SHEET NO.	TOTAL SHEETS
HAWAII	HAW.	4-D(1)	1940	13	23

MK	DESCRIPTION	Location	Size	Length	No. of Bars in Ea. Unit	No. of Units	Total No. of Bars	Total Length	Wt. Per Ft.	Total Weight	MK	DESCRIPTION	Location	Size	Length	No. of Bars in Ea. Unit	No. of Units	Total No. of Bars	Total Length	Wt. Per Ft.	Total Weight	MK	DESCRIPTION	Location	Size	Length	No. of Bars in Ea. Unit	No. of Units	Total No. of Bars	Total Length	Wt. Per Ft.	Total Weight		
313	Av 10'-0"	WINGWALLS Abut. No. 2 Lt.	3/8"	Var. Av. 10'-0"	4	2	8	80.0	0.38	30																								
312	Av 15'-0"	"	"	Var. Av. 15'-0"	16	1	16	240.0	"	91																								
314	17'-3"	"	"	17'-3"	11	2	22	379.5	"	144																								
										2746																								
401	Av 16'-1"	ABUT. No. 1 & 2	1/2"	Var. Av. 16'-1"	43	2	86	1382.9	0.67	927																								
402	17'-6"	"	"	17'-6"	1	2	2	35.0	"	23																								
407	15'-8"	"	"	15'-8"	1	2	2	31.3	"	21																								
603	 MK603	"	3/4"	14'-3"	53	2	106	1510.5	1.50	2266																								
602	 MK602	"	"	Var. Av. 20'-9"	54	2	108	2241.0	"	3362																								
315	Av 26'-6"	"	"	Var. Av. 26'-6"	2	4	8	212.0	0.38	81																								
316	44'-0"	"	"	44'-0"	13	4	52	2288.0	"	869																								
702	3'-0"	Abut. No. 2	7/8"	3'-0"	40	1	40	120.0	2.04	245																								
										7794																								
806	 SUPERSTR. Girders	"	1"	30'-1"	3	2	6	180.5	2.67	482																								
413		"	1/2"	8'-8"	26	2	52	450.8	0.67	302																								
412	26'-0"	"	"	26'-0"	2	2	4	104.0	"	70																								
800	 Deck	"	1"	28'-1"	40	1	40	1123.2	2.67	2999																								
801		"	"	29'-0"	40	1	40	1160.0	"	3097																								
502	42'-10"	"	5/8"	42'-10"	34	1	34	1456.2	1.04	1514																								
302	42'-10"	"	3/8"	42'-10"	2	2	4	171.3	0.38	65																								
										8529																								
										GRAND TOTAL																								
										25280																								

Revision: - Change in Skew

DESIGNED BY: *H. E. Bartels* DATE: *Oct. 1940*  
 DRAWN BY: *P. Yamashita*  
 QUANTITIES BY: *P. Yamashita*  
 CHECKED BY: *H. E. Bartels*  
 ORIGINAL PLAN NOTE BOOK NO.

**CONTRACTOR'S NOTE**  
 This steel schedule is subordinate to details shown on the plans. In case of discrepancy between steel list and detail drawings the latter shall govern.  
 The Territorial Highway Dept. does not assume responsibility for any errors that may occur in the steel schedule. Contractor shall check steel before placing order.  
 All stirrup dimensions are to inside of stirrups; all other dimensions are figured to center line of bars.

TERRITORIAL HIGHWAY DEPARTMENT  
 TERRITORY OF HAWAII  
**BRIDGE No. 1**  
 STA. 92+14.78 TO 92+41.22  
 WAIANAЕ ROAD F.A.P. 4 D(1)

SHEET No. 5 OF 5 SHEETS

## 4468.13